

Title: Effect of a Point-Of-Care Ultrasound-Driven vs Standard Diagnostic Pathway on 24-Hour Hospital Stay in Emergency Department Patients with Dyspnea — a Randomized Controlled Trial

Acronym: POCUS PATHWAY

# Trial Protocol

Version 3.0

January 31, 2024

ClinicalTrials.gov number: NCT05674916

Principal investigator:

Stig Holm Ovesen, M.D.

mail: [stigholm@clin.au.dk](mailto:stigholm@clin.au.dk)

Research Center for Emergency Medicine  
Department of Clinical Medicine  
Aarhus University  
Aarhus University Hospital  
8200 Aarhus N, Denmark

AND

Emergency Department  
Regional Hospital Horsens  
8700 Horsens, Denmark

# Contents

List of abbreviations .....	4
Overview .....	5
Trial flow .....	6
Steering committee.....	7
Trial sites .....	8
Revision chronology .....	9
1. Introduction.....	13
2. Objectives and hypothesis.....	15
3. Trial design .....	15
3.1 Overview .....	15
3.2 Randomization .....	15
3.3 Interventions.....	16
3.3.1 Point-of-care ultrasound-driven diagnostic pathway (Intervention) .....	16
3.3.2 Standard diagnostic pathway (Control) .....	16
3.3.3 Sonographer competence .....	17
3.3.5 Ultrasound validation .....	17
3.3.6 Diagnostic survey.....	17
3.3.7 Patients' experience questionnaire .....	17
3.4 Blinding .....	18
3.5 Trial procedures .....	18
3.5.1 Patients.....	18
3.5.2 Clinical personnel.....	18
4. Setting and Patient population.....	18
4.1 Setting.....	18
4.2 Inclusion criteria.....	18
4.3 Exclusion criteria .....	19
4.4 Site inclusion .....	19
5. Outcomes .....	19
5.1 Primary outcome .....	19
5.2 Secondary outcomes.....	20
5.3 Sub-study outcomes .....	20
5.4 Harms.....	21
6. Sample size calculation and Statistical analysis plan .....	21
6.1 Sample size calculation .....	21
6.2 Statistical analysis plan .....	21
6.2.1 General considerations .....	21
6.2.3 Analysis plan overview.....	22
6.2.4 Primary outcome .....	22
6.2.5 Secondary outcomes .....	22

6.2.6 Subgroup analyses (primary manuscript) .....	23
6.2.7 Sensitivity analyses (primary manuscript) .....	23
6.2.8 Missing data .....	24
6.2.9 Sub-study outcomes .....	24
7. Data collection and management.....	25
7.1 Data collection, management, and storage .....	25
7.2 Variables .....	26
7.2.1 Overview.....	26
8. Participant timeline .....	30
8.1 Screening and enrollment .....	30
8.2 Screening log.....	30
8.3 SPIRIT flow diagram: Schedule of enrolment, interventions and assessments .....	31
9. Ethical considerations.....	32
9.1 Clinical equipoise .....	32
9.1.1 Potential benefits .....	32
9.1.2 Potential harms .....	32
9.1.3 Risk/benefit ratio .....	32
9.2 Procedures.....	33
9.2.1 Ethical review committee .....	33
9.2.2 Trial-specific procedures.....	33
9.2.3 Insurance .....	33
10. Data monitoring .....	34
11. Timeline and Enrollment .....	34
11.1 Inclusion start and timeline.....	34
11.2 Recruitment .....	34
11.3 International sites .....	35
12. Patient and public involvement.....	35
13. Funding and economy .....	35
14. Publication plan .....	36
15. Data sharing .....	36
16. Tasks and responsibilities .....	37
References .....	38
Supplementary material.....	42
Point-of-care ultrasound.....	42
Point-of-care ultrasound-driven diagnostic pathway (Diagnostic decision recommendations).....	45
CONSORT flow diagram .....	47
Patients' experience questionnaire.....	48
Systematic word search-string.....	49
Scale to grade the physicians' experienced benefit of diagnostic tests .....	51

## List of abbreviations

CE = conformité européenne

CRF = case report form

CONSORT = consolidated standards of reporting trials

CPR-number = civil registration number (danish: det centrale personregister)

CT = computed tomography

CXR = chest x-ray

ECG = electrocardiogram

ED = emergency department

POCUS = point-of-care ultrasound

SDP = standard diagnostic pathway

SPIRIT = standard protocol items: recommendations for interventional trials

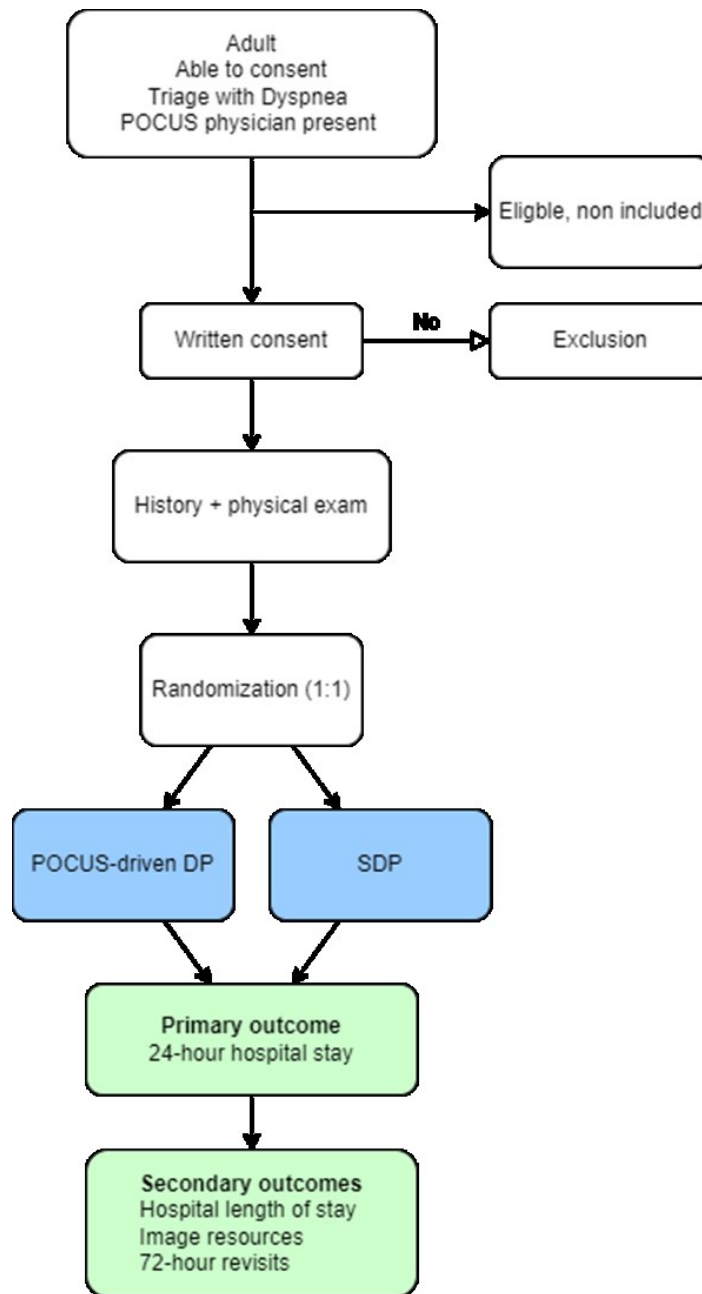
TBD = to be disclosed

95% CI = 95% confidence interval

## Overview

Registry and trial number	clinicaltrials.gov, NCT05674916
Date of registration	January 9, 2023
Funding	“Puljen til styrkelse af sundhedsforskning i Region Midtjylland”, Central Denmark Region; Frimodt-Heineke Foundation; Johan Schrøders Foundation; and Riisfort Foundation.
Primary sponsor	Stig Holm Ovesen
Contact	Stig Holm Ovesen, <a href="mailto:stigholm@clin.au.dk">stigholm@clin.au.dk</a>
Title	Effect of a Point-Of-Care Ultrasound-Driven vs Standard Diagnostic Pathway on 24-Hour Hospital Stay in Emergency Department Patients with Dyspnea — a Randomized Controlled Trial
Country of recruitment	Denmark
Condition studied	Dyspnea
Intervention	1) Point-of-care ultrasound-driven diagnostic pathway
Comparator	2) Standard diagnostic pathway
Inclusion criteria	1) Emergency department contact 2) Age $\geq$ 18 years 3) Chief complaint is Dyspnea 4) Including physician present
Exclusion criteria	1) Fulfilling of criteria for coded rapid-response teams (i.e., trauma, surgical or medical emergencies). 2) Prior enrollment in the trial 3) Prior focused lung or focused cardiac ultrasound in the current ED stay
Study type	Interventional Randomized (1:1) Intervention model: Parallel group Masking: Open-labelled
Date of first screening	January 4, 2023
Target sample size	674
Recruitment status	Started 25th of January 2023. To date, 490 patients have been included
Primary outcomes	24-hour hospital stay
Key secondary outcomes	(1) hospital length of stay (2) image resources (3) 72-hour revisits

## Trial flow



SDP = standard diagnostic pathway

## Steering committee

**Stig Holm Ovesen, M.D.**

Ph.D.-fellow/ Principal investigator  
Research Center for Emergency Medicine  
Department of Clinical Medicine  
Aarhus University and Aarhus University Hospital  
AND  
Emergency Department  
Regional Hospital Horsens

**Hans Kirkegaard, M.D., Ph.D., D.M.Sc.**

Professor  
Research Center for Emergency Medicine  
Department of Clinical Medicine  
Aarhus University and Aarhus University Hospital

**Rasmus Aagaard, M.D., Ph.D.**

Associate Professor  
Anaesthesia and Intensive Care  
Aarhus University Hospital

**Christian Laursen, M.D., Ph.D.**

Head of Research, Professor  
Department of Respiratory Medicine  
Odense University Hospital

**Michael Dan Arvig, M.D., Ph.D.**

Head of Research, Associate Professor  
Department of Emergency Medicine  
Slagelse Hospital  
AND  
Department of Clinical Medicine  
University of Copenhagen

**Jesper Weile, M.D., Ph.D.**

Associate Professor  
Emergency Department  
Regional Hospital Horsens  
AND  
Research Center for Emergency Medicine  
Department of Clinical Medicine  
Aarhus University and Aarhus University Hospital

**Søren Helbo Skaarup, M.D., Ph.D.**

Department of Respiratory Medicine  
Aarhus University Hospital

**Bo Løfgren, M.D., Ph.D.**

Professor  
Department of Internal Medicine  
Regional Hospital Randers  
AND  
Research Center for Emergency Medicine  
Department of Clinical Medicine  
Aarhus University and Aarhus University Hospital

**Stefan Posth, M.D., Ph.D.**

Associate Professor  
Emergency Department  
Odense University Hospital

**Bo Martin Bibby, Ph.D.**

Associate Professor  
Department of Biostatistics  
Aarhus University

## Trial sites

### **Horsens Regional Hospital**

Sundvej 30, 8700 Horsens  
Site investigator: Stig Holm Ovesen

### **Aarhus University Hospital**

Palle Juul-Jensens Boulevard 99  
8200 Aarhus N  
Site investigator: Nikolaj Raaber

### **Gødstrup Regional Hospital**

Hospitalsparken 15, 7400 Herning  
Site investigator: Gitte Boier Tygesen

### **Randers Regional Hospital**

Skovlyvej 9, 8930 Randers NØ  
Site investigator: Bo Løfgren

### **Viborg Regional Hospital**

Heibergs Alle 4, 8800 Viborg  
Site investigator: Thomas Nielsen

### **Odense University Hospital**

J. B. Winsløvs Vej 4, 5000 Odense C  
Site investigator: Stefan Posth

### **Esbjerg Hospital**

Finsensgade 35, 6700 Esbjerg  
Site investigator: Peter Biesenbach

### **Slagelse Hospital**

Ingemannsvej 50, 4200 Slagelse  
Site investigator: Michael Dan Arvig

### **Zealand University Hospital, Køge**

Lykkebækvej 1, 4600 Køge  
Site investigator: Charlotte Møgelvang

### **Aalborg University Hospital**

Hobrovej 18-22, 9000 Aalborg  
Site investigator: Anne Lund Krarup

### **Herlev Hospital**

Borgmester Ib Juuls Vej 1, 2730 Herlev  
Site investigator: Jesper Wamberg

### **Lillebælt Hospital, Kolding**

Sygehusvej 24, 6000 Kolding  
Site investigator: Anne Friesgaard Christensen

### **Nordsjællands Hospital**

Dyrehavevej 29, 3400 Hillerød  
Site investigator: Halfdan Lauritsen



# Revision chronology

*Version 2.7, 231127 to Version 3.0, 240122*

- **2. Objectives and hypothesis, 5.3 and 6.2.9 Sub-study outcomes, and 14. Publication plan**  
Descriptions removed about a second sub-study exploring clinical deterioration.
- **3. Randomization, 6.2.1 General considerations**
  - Changes to the procedure. The PI and statistician perform the sequence in R and the PI prepares the envelopes himself.
  - The PI and statistician will consequently not be blinded while conducting the statistical analysis; neither will two blinded conclusions be formulated.
- **3.3.3 Sonographer competence**  
Omission of an objective competence assessment.
- **5.2 Secondary outcomes**
  - Omission of a transformation to relative scale of the outcome 30-day hospital-free days.
  - Removing bronchodilators and systemic steroids from the outcome, Time to treatment.
- **6.1 Sample size calculation**
  - Addition of a 5% dropout assumption. Sample size increased to 674 from 642.
- **6.2 Statistical analysis plan, 6.2.1 General considerations**
  - Revised description of intention-to-treat analysis.
  - Changed logistic regressions for binary regressions anywhere.
- **6.2.5 Secondary outcomes (Statistical analysis plan)**  
Revised the plan for competing risk with Fine Gray model to using generalized linear model using pseudo-observations instead, using 72- and 168-hours hospital admission (3 and 7 days) as time interval.
- **6.7 Sensitivity analyses**
  - Removed the analysis described using a “physician investigator responsible time” variable.
  - Revised description of the “as-treated” analysis, according to diagnostic role of POCUS in relation to chest x-ray (add-on or replacement).
- **7.1 Data collection, management, and storage**  
Included SMS reminders at six- and eight-hours post-randomization.

- **7.2 Variables**  
Removed smoking status, Objective lung and cardiac ultrasound competence, Physician responsible for patient
- **8. Screening and enrollment**
  - o Revised the exact timing of randomization from after physical exams to immediately after consent.
  - o Revised description of diagnostic survey process in cases of shifting treating ED physician.
- **8.2 Screening log**  
Removed continuous monitoring of potential failures to include an eligible patient.
- **11.1 Inclusion start and timeline**  
Inclusion expected to continue until July 30, 2024.
- **13. Funding and economy**  
Added new funds.
- **Supplementary material, CONSORT flow diagram**  
Revised to illustrate potential post-randomization exclusions more clearly.

*Version 2.6, 230627 to Version 2.7, 231127*

- **11.1 Inclusion start and timeline**  
Inclusion expected to continue until June 10, 2024.

*Version 2.5, 230501 to Version 2.6, 230627*

- **Trial sites added**  
Nordsjælland and Kolding added as study sites.

*Version 2.4, 230307 to Version 2.5, 230501*

- **Site investigator Gødstrup changed**  
Gitte Boier Tygesen replaced Anders Møllekær.

*Version 2.3, 221122 to Version 2.4, 230307*

- **Trial sites added**  
Herlev and Aalborg added as study sites.
- **4.4. Double inclusion**

Section removed. Patients will not be restricted to inclusion only in this study.

- **Supplementary material, Systematic word search-string**  
Added "funktionsdyspnø" and "\*dyspnø" to the search-string.

*Version 2.2, 221122 to Version 2.3, 221212*

- **Title**  
Revised to: Effect of a Point-Of-Care Ultrasound-Driven vs Standard Diagnostic Pathway on 24-Hour Hospital Stay in Emergency Department Patients with Dyspnea — a Randomized Controlled Trial  
Previous: Effect of a Point-Of-Care Ultrasound-Driven vs Standard Diagnostic Pathway on 24-Hour Hospital Stay in Emergency Department Patients with Dyspnea
- **Trials site's section added**
- **2. Objectives and hypothesis, 5.2 Secondary outcomes, 6.2.5 Secondary outcomes, and 13. Publication plan**  
Patient experiences moved to secondary outcomes and primary manuscript (aims, outcomes, statistical plan, and publication plan).
- **3.3.7 Patients' experience questionnaire**  
Modified the survey distribution from "twenty-four hours after discharge" to "within one to seven days after discharge".
- **4.1 Setting**  
Koege, Esbjerg, and Viborg added as study sites.
- **4.2 Inclusion Criteria**  
Additional criteria for "Dyspnea" added to accommodate sites that use a triage system without chief complaints
- **4.5 Site inclusion**  
Site investigators mentioned.
- **6.2 Statistical analysis plan**  
Likelihood ratio test for binary comparisons revised to logistic regression.
- **6.2.8 Missing data**  
Added dropout analysis in the patients' experience analysis.
- **6.2.9 Sub-study outcomes**  
In the analysis of number of differential diagnoses as a continuous variable, poisson regression is planned instead of ordinal regression
- **16. Tasks and responsibilities**  
New section added regarding roles and responsibilities.
- **Point-of-care ultrasound (Detailed ultrasound protocol descriptions)**  
Added a detailed description of the focused lung and cardiac ultrasound protocols.
- **Point-of-care ultrasound-driven diagnostic pathway (Diagnostic decision recommendations)**  
Minor changes in recommendations.  
Addition of "Lung edema", "Pericardial effusion", and "Upper respiratory infection".  
"Heart failure/Incompensation" changes to "Heart Failure".

- **Consort flow diagram**  
Inclusions criteria added into screening eligibility sentence in the first diagram rubric.
- **Systematic word search-string for dyspneic patients added**
- **Explanation of scale used to grade the physicians' experienced benefit of diagnostic tests**

*Version 1, 220909 to Version 2.2, 221122*

- **7.1 Data collection, management, and storage**
  - Clarified that data from medical records are passed on from the hospitals to the project.
  - Elaboration on the collection and type of data in the screening-log including patient data from patients that have not consented.
  - Specifying the obligation to GDPR and Danish data protection law
- **13. Funding and economy**
  - Specifying that results will be sought published no matter negative, positive, or inconclusive.
  - Elaborating on potential conflicts of interest and economic connections between funds and stakeholders and the primary investigator.
- **15. Data sharing**  
Clarifying that the data sharing policy described could result in the sharing of completely anonymized data to foreign countries.

# 1. Introduction

Acute dyspnea is a dominating chief complaint in emergency departments (ED) worldwide.<sup>1-6</sup> Triage systems that take patients chief complaint into consideration include either “Dyspnea” or equal synonyms (i.e., “Shortness of breath” or “Breathlessness”).<sup>4 7-10</sup> Nevertheless, diagnostic uncertainty is still substantial due to unspecific and overlapping symptom complexes in disorders causing dyspnea, most frequently: chronic obstructive pulmonary disease, pneumonia, heart failure, pulmonary embolism, and asthma.<sup>11-15</sup> The evaluation of dyspnea is highly dependent on medical history and physical examination. But despite the additional usage of electrocardiograms, chest x-rays, arterial blood gas analysis, and large venous blood sample test panels, expert adjudicators post discharge still identify 30–40% of dyspneic patients with incorrect presumptive ED diagnoses.<sup>16-19</sup>

Point-of-care ultrasound (POCUS) poses as a potential valuable test in the diagnostic work-up of ED patients with acute dyspnea. The clinical performance of focused lung and cardiac ultrasound is well-founded to equalize or outperform other isolated diagnostic tests currently used for the spectrum of disorders causing acute dyspnea, but the clinical benefit is still unclear.<sup>20-27</sup>

To our knowledge no studies have found evidence that a diagnostic pathway guided by POCUS results in better patient outcomes. However, recent studies have found promising results for a simplification of the healthcare process, i.e., shorter hospital admission.<sup>19 28 29</sup> In emergency departments, Riishede et al. examined the accuracy of POCUS added onto the existing diagnostic pathway but secondarily found an increased rate of 24-hour hospital stays in favor of the POCUS-group.<sup>19</sup> In cardiopulmonary patients admitted to an internal medicine department, Cid et al. investigated the effect of POCUS added onto the diagnostic pathway at this timepoint in the hospital stay. In favor of the POCUS-group, they found a difference in length-of-stay of 11.9 hours, which was not significantly different. Notably, the second half of the cohort (according to the inclusion period) seemed to be driving all of the potential effect, indicating that a long lead-in period in this study could have increased the vulnerability to underestimating the true effect. Both Riishede et al. and Cid. et al. applied POCUS as an add-on to the standard diagnostic pathway and had sonographers other than the treating physicians to perform the POCUS examination.

We regard one of the greatest potentials of POCUS to be the augmented diagnostic certainty that it can give treating physicians during the initial history and physical examinations, thereby helping them to construct the most appropriate diagnostic pathway for each individual patient. Bearing this in mind, a

simplification of the healthcare process would be most likely under an implementation where confident treating ED physicians apply POCUS themselves and integrate their findings into clinical practice, letting it guide the remaining diagnostic pathway. Given the signalling trends that remained in Riishede et al. and Cid et al. despite potential shortages, we hypothesize that such a POCUS intervention would potentially lead to a more efficient healthcare process.

To further understand whether a point-of-care ultrasound-driven diagnostic pathway compared to a usual diagnostic pathway improves and simplifies healthcare processes for emergency department patients with dyspnea, we designed this trial.

## 2. Objectives and hypothesis

The primary aim of the study is to determine the effect of a point-of-care ultrasound-driven diagnostic pathway in dyspneic ED patients on 24-hour hospital stay when compared to standard diagnostic pathway.

The secondary aims are to investigate the effect of a point-of-care ultrasound-driven diagnostic pathway on: (1) hospital length of stay; (2) image resources; (3) 72-hour revisits; (4) 30-day hospital free days; (5) time to treatment; and (6) patients' experiences.

A sub-study is planned a priori. Based on two paired diagnostic surveys, it investigates the diagnostic thinking efficacy (Frybach and Thornbury Level 3<sup>30</sup>) by exploring the effect of POCUS on the following measures: (1) number of differential diagnoses; (2) diagnostic pre- and post-test probabilities; (3) experienced benefit of testing from the physicians' perspective; (4) concurrent treatment; and (5) change in diagnosis from ED contact to hospital discharge.

## 3. Trial design

### 3.1 Overview

This trial is designed as a multi-center, randomized, investigator-initiated, open labelled, pragmatic, controlled trial with two parallel groups.

### 3.2 Randomization

Patients will be randomized in a 1:1 ratio to either a point-of-care ultrasound-driven diagnostic pathway or SDP in blocks with random sizes of 2, 4, or 6 within eachsite. Unique randomization numbers (Study ID) for each patient will be generated according to each site and stratification variable. The randomized sequence of study identification numbers will be generated using the “blockrand” R package.<sup>31 32</sup> Opaque randomization envelopes will be prepared, packed, and shipped to participating centers based on their current tally and inclusion rate by the principal investigator. The allocation sequence list and block sizes are only known by the principal investigator and steering committee statistician.

### 3.3 Interventions

#### 3.3.1 Point-of-care ultrasound-driven diagnostic pathway (Intervention)

The intervention is focused lung and cardiac ultrasound performed as an extension to physical examinations plus diagnostic decision recommendations based on those test results (a point-of-care ultrasound-driven diagnostic pathway). Per protocol diagnostic decision recommendations will be provided for the treating physician, but only for specific ultrasound findings. Final decision on next-line imaging and further diagnostic testing should incorporate history and other physical examinations and will remain upon the treating physicians' discretion.

Point-of-care ultrasound will be performed by the treating ED physician at the discretion of her timing and workflow, as well as preference of ultrasound apparatus, transducer, and pre-set. The assessment will include focused lung and focused cardiac ultrasound; in total, estimated to take approximately eight minutes<sup>33</sup>. Cine-loops are documented sequentially for all protocolized acoustic windows. Indeterminate or missed views that are not saved in cine-loops will be documented in a separate survey instrument. Findings and interpretation will be documented in the electronic patient record for clinical purposes.

Focused lung ultrasound will include 8 zones (anterior and lateral) and evaluate pneumothorax, interstitial syndrome, lung consolidation, and pleural effusion. Focused cardiac ultrasound will include four views (subxiphoid four-chamber view, parasternal long-axis view, parasternal short-axis view, and apical four-chamber view) and evaluate pericardial fluid, right ventricle dilation, and left ventricular systolic contractility. See supplementary material for detailed ultrasound protocol descriptions.

Diagnostic decision recommendations will be developed based on existing literature, current guidelines, and steering committee consensus. They will be presented to including physicians in a suggested decision-tree including the most common etiologic causes of acute dyspnea. See supplementary material for a presentation of the diagnostic decision recommendations.

#### 3.3.2 Standard diagnostic pathway (Control)

Standard diagnostic pathway will include, but not be limited to, blood samples, blood gases, electrocardiogram, and chest x-ray. Focused lung and cardiac ultrasound cannot be performed while the patients stay in the emergency department. Other POCUS modalities can be applied immediately (i.e., lower extremity compression ultrasound or focused abdominal ultrasound). Chest CT, CT angiogram,



echocardiography, and other non-routinely performed tests remain exclusively upon the treating physicians' discretion.

### 3.3.3 Sonographer competence

All sonographers will fill out a baseline instrument including information on their specialization and experience (clinical as well as ultrasound). This information will be used in pre-defined sub-group analyses (see *section 6.2.5.*)

### 3.3.5 Ultrasound validation

An audit of ultrasound cine-loop quality will be performed post-hoc. In a random subgroup of ten percent of included patients weighted by the number of patients per physician and month of inclusion, audit will be performed in duplicate, on a 1-5 Likert-scale.<sup>34 35</sup> The scale is recommended by The American College of Emergency Physicians,<sup>35</sup> and this validity procedure has previously been applied in this research field.<sup>34</sup> The two auditors will be blinded for sonographer and patient characteristics, and they will be experienced users of point-of-care ultrasound as well as researchers in the field.

### 3.3.6 Diagnostic survey

The treating physician will complete a diagnostic survey twice: After the physician's primary assessment with/without POCUS, and after finalized initial SDP (blood samples, blood gas, ECG, and CXR). This will include a list of common cardiopulmonary conditions categorized. From this list the treating physician must select one primary diagnosis, an indeterminate number of differential diagnoses, and plot the diagnostic probability in the primary diagnosis on a visual analog scale from 0–100%. Lastly, the physician must grade the experienced benefit from different parts of the diagnostic work-up by using the following categories: "No new information", "New Pathology, but no further action needed", "Further diagnostics needed", "Presumptive diagnosis changed", or "Immediate treatment needed".

### 3.3.7 Patients' experience questionnaire

Within one to seven days after discharge, patients will receive an electronic questionnaire concerning their experiences from the emergency department stay. The questionnaire is adapted from the Danish Nation-Wide Patient's Experience Survey ("Landsdækkende Undersøgelse af Patientoplevelser"). Thereby, professional survey consultants have selected, formulated, and validated the questions. The questions will be graded on a 1–5 Likert scale (from "Not at all" to "Very much") with two alternative responses ("Don't know" and "Not relevant for me"). See supplementary material for the content and layout of the survey.

### 3.4 Blinding

Blinding patients or clinical teams will not be feasible.

### 3.5 Trial procedures

#### 3.5.1 Patients

The trial procedures will be limited to the point-of-care ultrasound-driven diagnostic pathway, the diagnostic survey, and the patient questionnaire; from there on, participation will only include data collection.

#### 3.5.2 Clinical personnel

Prior to the beginning of patient enrollment and continuously throughout the enrollment period, the clinical teams involved in the treatment of dyspneic patients at the participating hospitals will be informed about the trial. Clinical personnel will be informed about the background and objectives of the trial, the inclusion/exclusion criteria, the interventions, and the trial procedures they are involved in. We anticipate formal, in-person didactics continuously, with informal sessions and emails as applicable in between, as well as an educational video.

## 4. Setting and Patient population

### 4.1 Setting

Physicians and patients from multiple emergency departments will be included, university hospitals as well as regional hospitals and Danish as well as international sites are welcomed. The following Danish emergency departments are expected to include patients: Horsens, Goedstrup, Aarhus, Randers, Odense, Koege, Esbjerg, Viborg, Slagelse, Aalborg, Kolding, Nordsjaelland, and Herlev. An updated list of study sites is kept in the top of this project description.

### 4.2 Inclusion criteria

- 1) Emergency department contact
- 2) Age  $\geq$  18 years
- 3) Chief complaint is Dyspnea
  - a. Triaged with Dyspnea (or similar, i.e., Breathlessness) as chief complaint in the local emergency department OR prehospital triage system
  - b. Chief complaint is not implemented in local triage system AND prehospital triage not performed, BUT

- i. in the general practitioner referral note, the wording is compatible with chief complaint Dyspnea (according to a predefined systematic word search-string, see supplementary).
- ii. in the prehospital notification OR emergency medical service crew notes, the wording is compatible with chief complaint Dyspnea (according to a predefined systematic word search-string, see supplementary).
- iii. in the criteria-based emergency medical service dispatch tool, the chapter for Dyspnea (or similar, i.e., Breathlessness) is used.

#### 4) Including physician present

### 4.3 Exclusion criteria

- 1) Fulfilling of criteria for coded rapid-response teams (i.e., trauma, surgical or medical emergencies).
- 2) Prior focused lung or focused cardiac ultrasound in the current ED stay
- 3) Prior enrollment in the trial
- 4) Unable to consent
- 5) Non Danish-speaking

### 4.4 Site inclusion

Study centers will be included on the basis of emergency department physicians who wish to participate. Participating physicians must have: 1) certified competence in point-of-care ultrasound; 2) an experience of >50 cardiac and lung scans; 3) clinical experience corresponding to three post-graduate years; 4) be in residency training or be specialized; and 5) be working in emergency medicine. Each participating site will have a local site investigator that help the primary investigator to monitor enrollment.

## 5. Outcomes

### 5.1 Primary outcome

The primary outcome, 24-hour hospital stay, will be defined as the proportion of patients having a hospital stay (from ED arrival to hospital discharge) of less than 24 hours.

## 5.2 Secondary outcomes

Hospital length-of-stay, defined from ED arrival to hospital discharge, will secondarily be analyzed non-binarily.

Image resources will be quantified in numbers of the following imaging techniques performed during the current hospital stay: chest x-rays, echocardiography, computed tomography (CT) angiography, and CT thorax.

72-hour revisits will be defined as a composite outcome including any unplanned hospital stay within 72 hours from the previous hospital discharge, in-hospital mortality, and mortality within 72 hours from the previous hospital discharge.

Hospital-free days will be defined as the number of days within the 30-day period following hospital discharge where the patient is not hospitalized and alive.<sup>36</sup> In-hospital death will be computed as zero hospital-free days. Registrations showing that a patient has left home for a hospital errand will be computed as one day that was not hospital-free (i.e., outpatient or paraclinical follow-up visits). Long- or short-stay nursing facilities, inpatient hospice facilities, or rehabilitation facilities will count as hospital-free, as will all days at home, including those with home-based medical services.<sup>36</sup>

Time to treatment will be defined as time from ED arrival until administration of any of the following predefined subgroups of treatment: antibiotics, diuretics, and anticoagulants. Only ED administrations will be included. Oral and intra-venous treatments will not be separated.

Patients' experiences will be defined on the ordinal scale described in Section 3.3.6.

## 5.3 Sub-study outcomes

From the diagnostic survey, “Number of differential diagnoses” will be computed as the sum of selected diagnoses in the survey.<sup>37,38</sup> “Diagnostic pre- and post-test probabilities” will be defined as the percentage of diagnostic probability for the primary diagnosis filled in repeated surveys.

The experienced benefit of testing from the physicians' perspective will be defined at baseline for the objective examination with or without POCUS, compared to the patient history. Later, after finalized initial SDP, gradings for each of: blood analyzes, blood gas, ECG, and CXR will be defined and compared with the baseline benefit from history plus objective examination with or without POCUS.

Concurrent treatment will be defined as either of the following drug-combinations: corticosteroids plus intravenous diuretics or antibiotics plus intravenous diuretics, administered within the first two hospital days.<sup>39</sup>

Change in diagnosis from ED contact to hospital discharge will be defined as a difference between the ED primary diagnosis (from the second diagnostic survey) and the hospital discharge diagnosis categorized as previously described.<sup>15</sup>

## 5.4 Harms

Point-of-ultrasound is considered safe and commonly used in clinical practice. The overall benefit and potential harm of the interventions will be captured in our primary and secondary outcomes. See the ethical section (9.1) for considerations of potential harm.

## 6. Sample size calculation and Statistical analysis plan

### 6.1 Sample size calculation

Based on a previous study with a similar population, the proportion of patients discharged within 24 hours is expected to be 24%.<sup>19</sup> They found that 40% of POCUS group patients were discharged within 24 hours, corresponding to a risk difference of 16% (24% versus 40%). We regard a risk difference of 10% as clinically relevant. Based on a chi-squared test, assuming 5% dropouts and an alpha of 0.05, a sample size of 674 patients (337 per group) is needed to obtain 80% power.

### 6.2 Statistical analysis plan

#### 6.2.1 General considerations

The statistical analyses and reporting of the primary manuscript will adhere to the Consolidated Standards of Reporting Trials (CONSORT)-guidelines. All tests will be two-sided, a p-value <0.05 will be considered significant, and all confidence intervals will have 95% coverage. Patient inclusion and exclusion will be illustrated in a CONSORT flow diagram (see supplementary material for a draft).

Post-randomization exclusion from analyses will expectantly only happen from withdrawal or mislaying of patient consent or duplicate inclusion of the same individual. Apart from that, all analyses will be conducted on an intention-to-treat basis.<sup>40 41</sup>The two groups will be compared in relation to baseline characteristics using descriptive statistics.

### 6.2.3 Analysis plan overview

Outcome	Measure	Estimate
24-HOUR HOSPITAL STAY (PRIMARY)	Number (Proportions)	Risk difference and relative risk
Hospital length-of-stay	Hazard rates	Overall hazard ratio
3-day (72 hours) hospital length-of-stay	Number (Proportions)	Relative risk
7-day (168 hours) hospital length-of-stay	Number (Proportions)	Relative risk
Image resources	Number (Proportions)	Risk difference and relative risk
72-hour revisits	Number (Proportions)	Risk difference and relative risk
30-day hospital-free days	Mean	Mean difference
Time to treatment	Incidence	Hazard ratio
Patients' experiences	Mean	Mean difference

### 6.2.4 Primary outcome

The primary outcome will be presented as the absolute number and incidence proportions in each group. Groups will be compared using risk difference and relative risk with 95% confidence intervals and a p-value will be calculated based on a binary regression.

### 6.2.5 Secondary outcomes

Hospital length-of-stay will be analyzed using time-to-event analysis and pseudo-observations. The Nelson-Aalen estimator will be applied to estimate the cumulative hazard rates in the intervention and control groups. A Cox regression will be used to compare the overall hazards. Lastly, a generalized linear model using pseudo-observations accounting for in-hospital mortality as a competing risk will compare between-group discharge risks within 3 and 7 days (including the endpoint day, 72 and 168 hours).

Image resources will be presented as a composite absolute number and incidence proportion counting the cumulative number of participants having received any of the diagnostic tests mentioned in *Section 5.2*. Comparison between groups will be performed using risk difference and relative risk with 95% confidence intervals and a p-value will be calculated based on a binary regression. The absolute numbers and incidence proportions of each diagnostic test will be reported descriptively ordered by group.

72-hour revisits will be presented as the composite outcome with cumulative number of events and incidence proportions with 95% confidence intervals. Comparison between groups will be presented as risk difference and relative risk with 95% confidence intervals and a p-value will be calculated based on a binary regression. The absolute numbers and incidence proportions of patients admitted within 72 hours, dying in-hospital, and dying within 72 hours will be reported descriptively ordered by group.

30-day hospital free days will be presented as raw means in the two groups with 95% confidence intervals. Comparison of the intervention-effect will be quantified in a mean difference from the likelihood function underpinning the likelihood ratio test described below. To produce a p-value, a likelihood ratio test will be built upon a logistic model for mortality and a linear regression for days alive outside hospital within 30 days for patients who are discharged alive within 30 days (a tobit regression model).

Time to treatment will be presented as a composite outcome with a median and interquartile interval for both groups. Comparison will be performed by using cox regressions analysis with study time as time scale. Treatments are commonly administered within the first 1–6 hours and before the competing events as death, intensive care or other inpatient unit admission. Therefore, they will all be censored. A hazard ratio with 95% confidence interval and a p-value will be presented.

Patients' experiences will be treated continuously, comparing mean scores between groups using a unpaired t-test. For descriptive comparison, category-distributions will be depicted by group.

#### 6.2.6 Subgroup analyses (primary manuscript)

Subgroup analyses will be performed on the relative scale for the primary outcome. The trial is not powered to detect subgroup differences, and these will be considered exploratory and hypothesis generating. Subgroup analyses will be performed according to: (1) ED arrival (day, evening, or night); (2) weekdays or weekend/holiday; (3) physicians' ultrasound competence categorized; (4) physicians' post-graduate years categorized; (5) prehospital presumptive diagnosis; and (6) 10-year patient-age intervals.

#### 6.2.7 Sensitivity analyses (primary manuscript)

Four pre-planned sensitivity analyses will be performed to investigate the influence of "sonographer-variation" and "physician investigator effect" on the primary outcome.

To examine the hierarchical influence from "sonographer-variation" on the primary outcome, relative differences with 95% confidence intervals will be obtained from a binary regression model with the stratification variable "treating physician" included as a random effect.

To examine the influence from "physician investigator effect" on the primary outcome, the primary analysis plan described in *Section 6.2.3* will be repeated stratified by a "discharging physician" (physician investigator vs. another physician) variable “ ”

To examine the effect of the different diagnostic roles of ultrasound and chest x-ray on the primary outcome, the primary analysis plan will be repeated in an as-treated analysis. Patients will be grouped into a POCUS add-on or replacement group in relation to chest x-ray.

#### 6.2.8 Missing data

Missing data will be reported for all relevant outcomes and characteristics. We expect few, if any missing data for the primary outcome. Missing data will be handled by excluding patients with missing values needed for any given analysis. For the patients' experience questionnaires, we expect approximately 40% dropouts. Dropout analyses will be performed by comparing baseline characteristics between patient responders and non-responders.

#### 6.2.9 Sub-study outcomes

Number of differential diagnoses will be presented as median with interquartile interval (25<sup>th</sup> and 75<sup>th</sup> percentiles) in each group. Comparison between groups will be performed by using a poisson regression model for the total number of differential diagnoses in the second survey as well as for the delta number of diagnoses between the two surveys. Additionally, exploratory binary risk estimates will be computed and compared using a binary regression for the following outcomes: proportion of patients with less than three differential diagnoses in the second survey and proportion of patients with a reduced number of differential diagnoses.

Diagnostic pre- and post-test probabilities will be presented as means with standard deviation in each group. Comparison will be performed by using the student's t-test for the mean from the second survey as well as for the mean-difference between the paired surveys. The proportion of patients with an unchanged diagnostic probability (difference below ten percentage-points) will be computed and compared with risk estimates and a binary regression.

Sub-group analyzes will be performed exploratory for all abovementioned outcomes for number of differential diagnoses and diagnostic probabilities, according to the following variables: (1) change in diagnosis between ED contact to hospital discharge; (2) physician ultrasound competence; (3) prehospital presumptive diagnosis.

Physicians' experienced benefit of testing will be dichotomized for comparison analysis and presented with risk estimates and 95% confidence intervals and a p-value from a binary regression. For descriptive comparison, category-distributions will be figured by group.



Concurrent treatment will be presented as a composite absolute number and incidence proportion counting the cumulative number of participants having received any of the concurrent treatment combinations. Comparison between groups will be performed using risk difference and relative risk with 95% confidence intervals and a p-value will be calculated based on a binary regression. The absolute numbers and incidence proportions of each treatment combination will be reported descriptively ordered by group.

Change in diagnosis from ED contact to hospital discharge will be presented as the absolute number and incidence proportions in each group. Groups will be compared using risk difference and relative risk with 95% confidence intervals and a p-value will be calculated based on a logistic regression.

## 7. Data collection and management

### 7.1 Data collection, management, and storage

Sonographer characteristics and objective competence, case report form (CRF), diagnostic surveys, and patient questionnaires will be collected prospectively in a REDCap® database. Only limited data will be obtained in the CRF (see *section 7.2.1*). The CRF will be available in a paper and electronic format. The paper-CRF will be filled during all prospective screenings and stored securely, according to legal regulations. Site investigators will monitor and enter the paper-CRF data from non-included patients into the electronic database. The electronic-CRF (eCRF) will be filled by the treating physicians in included patients.

Few, completely anonymized patient characteristics will be passed on from the hospital to the project before consent, in all screened patients. This screening log data will be passed on from the hospitals' business intelligence data warehouses encompassing routinely collected data from the electronic medical record. The screening log will for all screened patients include the following variables: age, gender, hospital length-of-stay, and the number of patients fulfilling inclusion criteria and exclusion criteria. Screening log data will be used in the study to describe patient flow in the CONSORT diagram (see variables in overview 7.2.1).

Consent forms will be stored securely, according to legal regulations. Site investigators will monitor their storage and enter available data into the electronic database (i.e., treating physician name, patient name and contact information).

To minimize missing data, SMS-reminders with direct data-entry links to the diagnostic survey in REDCap® will be sent to treating physicians at four, six, and eight hours post randomization.

Baseline characteristics, vital parameters, biochemical and microbiologic results, treatments, admission metrics (timing and units), readmissions, and mortality will be collected retrospectively by using routinely collected patient-record data passed on from regional data warehouses.

The primary assessment findings, ultrasound findings, and radiologic findings will be manually entered into a REDCap® database based on independent, duplicate review of the medical records.

All data will be collected longitudinally using the personal identification number as key identifier.

Every physician including patients will have access to data capture instruments in REDCap®. Members of the steering committee will have access to the entire database and user management. All data entries in REDCap® will use the same linkage between a record ID and personal identification number.

All routinely collected, data warehouse, data have 100% completeness of identifiers and are linked by using entity keys for the personal identification number. Routinely collected data will be linked to REDCap-data by using the personal identification number.

All data will be kept in a secure content management system (Hyland Alfresco™, Boston, Massachusetts, USA). Data management will be computed by using STATA® (Statacorp, Houston, TX, USA).

Ultrasound film clips will be stored securely, according to local legal regulations.

Data handling will comply with General Data Protection Regulation (European Union 2016/679) and the Danish act for data protection (ACT 502 of 23<sup>rd</sup> May 2018).

## 7.2 Variables

### 7.2.1 Overview

A detailed data dictionary that clearly defines all included variables will be created and publicly shared prior to any data management and coding. The data dictionary will provide the name of the variable (including the code used in the database), a detailed definition of the variable, categories for categorical variables, and units and ranges for continuous variables. Below is provided a brief overview of the included variables but details are reserved for the data dictionary. The following variables will be obtained on all included patients:

Variable	Collection	Source	Purpose
<b>Before consent, all screened patients</b>			
Site	Retrospective	Paper-CRF or BI data *	Screening log
Treating physician	Prospective	Consent form	Screening log
<b>INCLUSION CRITERIA</b>			
Emergency department contact	Retrospective	Paper-CRF or BI data	Screening log
Age ≥ 18 years	Retrospective	Paper-CRF or BI data	Screening log
Triaged with Dyspnea as chief complaint	Retrospective	Paper-CRF or BI data	Screening log
Including physician present	Prospective	Duty schedule	Screening log
<b>EXCLUSION CRITERIA</b>			
Coded rapid-response teams	Retrospective	Paper-CRF or BI data	Screening log
Prior focused lung or focused cardiac ultrasound in the current ED stay	Prospective	Paper-CRF	Screening log
Prior enrollment in the trial	Retrospective	Paper-CRF or BI data	Screening log
Unable to consent	Prospective	Paper-CRF	Screening log
Non Danish-speaking	Prospective	Paper-CRF	Screening log
Age	Retrospective	BI data	Screening log
Sex	Retrospective	BI data	Screening log
Length-of-stay	Retrospective	BI data	Screening log
<b>After consent, only included patients</b>			
<b>PATIENT REGISTRATION DATA</b>			
Site	Prospective	eCRF <sup>5</sup>	Baseline characteristics
CPR number, patient	Prospective	eCRF	Identifier
Full name, patient	Prospective	Consent form	Identifier
E-mail, patient	Prospective	Consent form	Study results information
Address, patient	Retrospective	BI data	Study results information
Telephone number, patient	Prospective	Consent form	Patient questionnaire invite
Datetime of consent	Prospective	Consent form	Study time origin
Randomization	Prospective	eCRF	Study allocation
<b>SONOGRAPHER CHARACTERISTICS</b>			
Name	Prospective	Sonographer survey	Baseline characteristics
Seniority (specialist, resident, etc)	Prospective	Sonographer survey	Baseline characteristics
Post-graduate years	Prospective	Sonographer survey	Baseline characteristics
Specialization	Prospective	Sonographer survey	Baseline characteristics
Ultrasound experience	Prospective	Sonographer survey	Baseline characteristics
Ultrasound education	Prospective	Sonographer survey	Baseline characteristics
<b>PATIENT DEMOGRAPHICS AND CHARACTERISTICS</b>			

	Age	Retrospective	BI data	Baseline characteristics
	Sex	Retrospective	BI data	Baseline characteristics
	Height	Retrospective	BI data	Baseline characteristics
	Weight	Retrospective	BI data	Baseline characteristics
	Co-morbidities	Retrospective	BI data + MR <sup>§</sup>	Baseline characteristics
	Prior admissions within the last year	Retrospective	BI data	Baseline characteristics
	Prior chest or cardiac imaging within last month	Retrospective	BI data	Baseline characteristics
	OUT OF HOSPITAL CHARACTERISTICS			
	Prehospital ultrasound	Retrospective	BI data	Baseline characteristics
	Prehospital record	Retrospective	BI data	Baseline characteristics
	General practitioner referral notes	Retrospective	BI data	Baseline characteristics
	TRIAGE AND ED METRICS			
	Arrival datetime	Retrospective	BI data	Outcomes time origin
	Chief complaints	Retrospective	BI data	Baseline characteristics
	Vital parameters	Retrospective	BI data	Baseline characteristics
	Triage color	Retrospective	BI data	Baseline characteristics
	Seen by physician	Retrospective	BI data	Baseline characteristics
	MEDICAL HISTORY			
	Medications	Retrospective	BI data	Baseline characteristics
	Symptoms	Retrospective	MR	Baseline characteristics
	PHYSICAL EXAMINATIONS			
	Jugular venous exam	Retrospective	MR	Baseline characteristics
	Cardiac auscultation	Retrospective	MR	Baseline characteristics
	Peripheral pulses exam	Retrospective	MR	Baseline characteristics
	Lung percussion	Retrospective	MR	Baseline characteristics
	Lung auscultation	Retrospective	MR	Baseline characteristics
	Clubbing	Retrospective	MR	Baseline characteristics
	Abnormal breathing patterns	Retrospective	MR	Baseline characteristics
	Lower extremity exam	Retrospective	MR	Baseline characteristics
	POINT-OF-CARE ULTRASOUND CHARACTERISTICS			
	POCUS performed	Prospective	1 <sup>st</sup> diagnostic survey	Intervention characteristics
	POCUS duration	Prospective	Cine-loop meta-data	Intervention characteristics
	Indeterminate views	Prospective	1 <sup>st</sup> diagnostic survey	Intervention characteristics

	Missed views	Prospective	1 <sup>st</sup> diagnostic survey	Intervention characteristics
	Pneumothorax	Retrospective	MR	Intervention characteristics
	Focal multiple B-lines	Retrospective	MR	Intervention characteristics
	Consolidation	Retrospective	MR	Intervention characteristics
	Pleural effusion	Retrospective	MR	Intervention characteristics
	Interstitial syndrome	Retrospective	MR	Intervention characteristics
	Pericardial effusion	Retrospective	MR	Intervention characteristics
	Dilated right ventricle	Retrospective	MR	Intervention characteristics
	Left ventricular systolic contractility	Retrospective	MR	Intervention characteristics
	DP <sup>€</sup> CHARACTERISTICS			
	Biochemistry analyses	Retrospective	BI data	DP characteristics
	Electrocardiogram	Retrospective	BI data	DP characteristics
	Imaging	Retrospective	BI data	Outcome analyses
	Microbiology	Retrospective	BI data	DP characteristics
	Pathology	Retrospective	BI data	DP characteristics
	Performed datetime	Retrospective	BI data	DP characteristics
	Results datetime	Retrospective	BI data	DP characteristics
	HOSPITAL STAY METRICS			
	Discharging physician	Retrospective	BI data	Sub-group analyses
	Diagnosis registrations	Retrospective	BI data	Outcome variable generation
	Department and unit admissions	Retrospective	BI data	Baseline characteristics
	Datetimes of transfers	Retrospective	BI data	Baseline characteristics
	Vital parameter measurements	Retrospective	BI data	Outcome variables generation
	OUTCOMES			
	Length-of-stay	Retrospective	BI data	Outcome analyses
	Hospital contacts following 30 days	Retrospective	BI data	Outcome analyses
	Mortality	Retrospective	BI data	Outcome analyses
	Treatments	Retrospective	BI data	Outcome analyses
	Patients' experience	Prospective	Patient survey	Outcome analyses
	Number of differential diagnoses	Prospective	Diagnostic surveys	Outcome analyses
	Diagnostic pre- and post-test probabilities	Prospective	Diagnostic surveys	Outcome analyses
	Physicians' experienced benefit of testing	Prospective	Diagnostic surveys	Outcome analyses

\*BI data = business intelligence data, <sup>§</sup> CRF = case report form, <sup>§</sup> MR = medical record, <sup>€</sup> DP = diagnostic pathway

## 8. Participant timeline

### 8.1 Screening and enrollment

Patients will be screened by the including physician looking through lists of patients arriving to the ED with dyspnea. During the initial assessment, and upon fulfillment of inclusion criteria, the treating physician will ask for informed consent, enroll, and randomize the patient. The exact time of randomization should be immediately after the consent has been signed. When asked for informed consent, each patient will be provided with that amount of time for consideration she needs and given the opportunity to request an assessor (see 9.3.2) considering the acute nature of the disease.

Shifting treating ED physician is likely to happen in-between intervention and completion of the diagnostic work-up. In any case of shifting treating ED physician, the physician investigator will have the opportunity to either terminate the second diagnostic survey before complete ED work-up has been finalized or to fill it retrospectively based on electronic medical journal audit. .

### 8.2 Screening log

Including physicians will not be able to screen all potentially eligible patients. Therefore, all patients, at the participating sites, with a registered chief complaint of dyspnea will be retrospectively entered into a screening log, if they were not included in the study. Patients that physicians screen, will also be included in the screening log prospectively by using the paper-CRF. Patients fulfilling inclusion criteria and no exclusion criteria but who are not randomized will be deemed "inclusion failure".. Patients in the screening log who arrived at the ED when an including physician was present will be deemed "eligible, non-enrolled". Those patients in the screening log arriving at other timeslots, will be deemed "non-eligible due to no including physician present".

### 8.3 SPIRIT flow diagram: Schedule of enrolment, interventions and assessments

TIMEPOINT	STUDY PERIOD						
	Enrolment	Randomization	Post-randomization		Close-out		Follow-up
	-t1	0	t1 PA/± POCUS	Ended SDP	ED Discharge	Discharge	7-30 days
<b>ENROLMENT:</b>							
Eligibility screen	X						
Screening log	X						X
Informed consent		X					
Randomization		X					
<b>INTERVENTIONS:</b>							
POCUS-driven IP			X				
SDP			X				
<b>ASSESSMENTS:</b>							
Case Report Form	X	X					
Diagnostic survey			X	X			
Patient Questionnaire						X	
Retrospective data retrieval Baseline characteristics Vital parameters Biochemical findings Microbiologic findings Treatments Admission metrics (timing and units) Readmissions Mortality						X	X
Manual record review PA findings Ultrasound findings Radiologic findings						X	X

SDP=standard diagnostic pathway, PA=primary assessment

## 9. Ethical considerations

### 9.1 Clinical equipoise

#### 9.1.1 Potential benefits

The introduction section (section 1) provides details on the potential benefits of a POCUS-driven diagnostic pathway. In brief, no randomized controlled trials have investigated the effect of POCUS on patient-centered outcomes, few trials have investigated POCUS as a first-line test, and no studies have verified the robustness of the secondary finding on 24-hour hospital stay found by Riishede et al.<sup>19</sup>

#### 9.1.2 Potential harms

The addition of POCUS is pain- and radiation free. Ultrasound users should always be aware of the thermal and mechanical indexes, but particular care should not be taken when transthoracic ultrasound is performed in this population.<sup>42</sup> Incidental findings in this study can occur, but in a comparable study, the number of downstream interventions were overall non-different between groups, and rather accelerated in time than increased in number.<sup>16</sup> Patient discomfort from POCUS in dyspneic patients is infrequent.<sup>43</sup>

Based on the diagnostic decision recommendations given in the POCUS-driven intervention, patients in the intervention group can potentially be burdened by less diagnostic tests and thereby under- or misdiagnosis. The single diagnostic test that will be cut down is overridingly chest x-ray. However, based on existing diagnostic accuracy evidence, the risk for under- or misdiagnosis seems negligible given that POCUS equalizes or outperform chest x-ray in these studies. Likewise, in rare cases, when treating physicians have already implemented focused lung or cardiac ultrasound in their everyday clinical practice and patients are randomized to the control group, it can be argued that patients are burdened by this study allocation. In both scenarios, it is important to stress that the treating physician can always discontinue or modify allocated intervention if clinical deterioration and patient safety demands it.

#### 9.1.3 Risk/benefit ratio

The diagnostic evidence from multiple diagnostic accuracy studies published on POCUS for dyspneic ED patients provide evidence that the real risk of harm or patient burdening is minimal. However, despite some solid-designed studies, the benefit from large-scale and pragmatic implementations is still unclear. The current patient risk/benefit ratio is promising and unlikely above one. However, still no evidence of clear patient-relevant benefits exists. In conclusion, there is clear clinical equipoise for the POCUS-driven diagnostic pathway for dyspneic ED patients.



## 9.2 Procedures

### 9.2.1 Ethical review committee

The trial will be approved by the regional ethics committees (case number: 1-10-72-160-22).

### 9.2.2 Trial-specific procedures

Patients will be asked for informed consent before enrollment and randomization. Trial information and the consent request will take place in an undisturbed room and the patient will have the opportunity to request an assessor. Between the trial information and the consent request, the patient will be provided with an appropriate amount of time for consideration with respect to the acute situation, and further time can be requested as needed. The person obtaining consent will be a member of the trial team (i.e., physician, research nurse, medical student etc.) with sufficient knowledge about the patient, the condition, and the trial.

When approached, the patient will be informed, verbally and in writing, about the background and significance of the study, inclusion criteria, potential risks and benefits, as well as a brief description of the study protocol. They will be informed that interventions only include the point-of-care ultrasound-driven diagnostic pathway and the questionnaire, and that future participation will only include data collection. The patient will then provide written informed consent utilizing the informed consent form approved by the ethical review committee. When consent is obtained from participants, information about potential de-identified data sharing will also be included.

An informed consent includes permission to obtain relevant health information on included patients from the electronic patient record obtained and accessed by study personnel as well as relevant, controlling authorities if necessary.

If a patient who has already consented, at some point denies future participation in the trial, no additional data will be collected but all data collected up until the point of withdrawal will be included consistent with Danish law.<sup>44</sup>

### 9.2.3 Insurance

The patients in the study are covered by the Danish patient insurance.<sup>45</sup>

## 10. Data monitoring

The POCUS-driven diagnostic pathway constitutes a minimal risk of harm; therefore, no periodic inspection of accumulating outcome data is planned. Good clinical practice monitoring is not mandated as the trial uses diagnostic equipment that is CE approved to the specific purpose. Participants are not subject to additional risky procedures and therefore registration to the Danish Medicines Agency is not required.

## 11. Timeline and Enrollment

### 11.1 Inclusion start and timeline

The inclusion process started on January 25, 2023. As of January 31, 2023, 490 patients have been included, with an average rate of 1.3 patients per day. To achieve the targeted sample size of 674 patients, the inclusion process is expected to continue until July 30, 2024.

### 11.2 Recruitment

A sceptic assumption is that each physician can include a patient every 12 days and that each site will have three physicians being able to include. With this inclusion rate, 7 sites or 21 physicians can finalize inclusion by February 25, 2024 (in 421 days) and 13 sites or 39 physicians can finalize by October 23, 2023 (in 296 days). It may be that some sites have more than three competent and willing physicians and we do hope for higher inclusion rates per physician-day than 0.08. But from these brief calculations we feel confident that it will be feasible to complete study inclusion at some point in between October 2023 and February 2024.

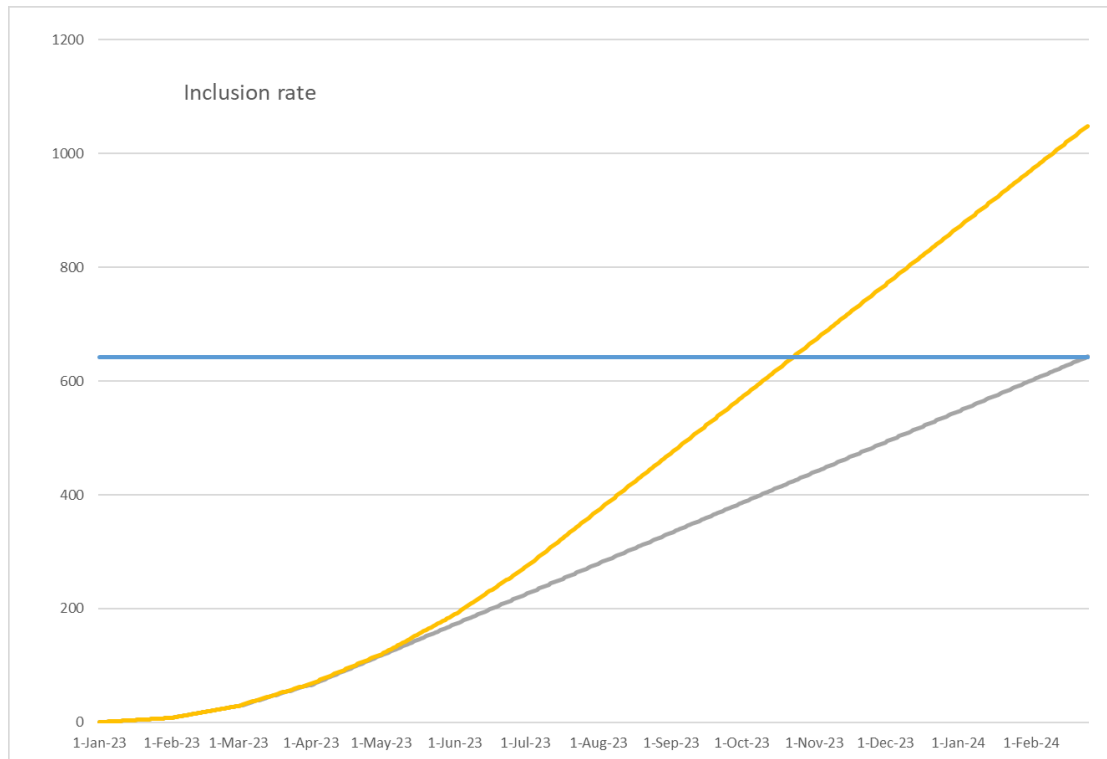


Figure 1: Blue line is sample size of 642. Grey line is 7 sites and orange line is 13 sites

### 11.3 International sites

Non-Danish sites can participate on the same terms as Danish sites and physicians. Local legislation must be followed, and local ethics committees consulted. Data will be kept and managed under local site facilities and data collection methods may be altered according to feasibility and available sources. Few secondary or tertiary outcomes may also be omitted in case data is not producible or clinical practice is affected. The patients' experience questionnaire will only be distributed among Danish sites.

## 12. Patient and public involvement

Patients and the public will not be involved in the preparation or execution of the present trial. The results will be disseminated in public and directly to involved patients by request in the written consent form.

## 13. Funding and economy

This investigator-initiated study is funded by the Central Denmark Region (with 1.629.000 DKK), Frimodt-Heineke Foundation (kr. 40,000), Johan Schrøders Foundation (kr. 200,000), and Riisfort Foundation (kr. 211,858). The funding that covers wage costs for the primary investigator are held in a research account

at Horsens Regional Hospital. The primary investigator is employed at the Central Denmark Region but neither of the sponsors have any role in designing or executing the study or interpreting, writing, or submitting the manuscript. The primary investigator declares no other conflicts of interest.

## 14. Publication plan

Two manuscripts are planned from the current trial. The first and primary manuscript will include the primary and secondary outcomes (see *section 5.1 and 5.2*). This manuscript will adhere to the CONSORT guidelines <sup>46</sup>. Results will be sought published in an international peer-reviewed journal regardless of findings (i.e., negative, positive, and inconclusive results). If any protocol amendments are necessary, they will be clarified in the final report. The principal investigator will be the first and corresponding author, and JW will be the last author. Additional authorship will follow authorship guidelines from the International Committee of Medical Journal Editors <sup>47</sup> and will include members of the steering committee and one site investigator per site. In addition, physicians enrolling  $\geq 20$  patients will be offered critical manuscript revision and authorship. The trial results will be shared with participating sites and via press releases but not directly with the participating patients. The second manuscript will investigate the diagnostic thinking efficacy by focusing on the diagnostic outcomes: (1) number of differential diagnoses; (2) diagnostic pre- and post-test probabilities; (3) experienced benefit of testing from the physicians' perspective; (4) concurrent treatment; and (5) change in diagnosis from ED contact to hospital discharge.

## 15. Data sharing

Six months after the publication of the last results, all de-identified individual patient data will be made available for data sharing <sup>48</sup>. Procedures, including re-coding of key variables, will be put in place to allow for complete de-identification of the data. Data will be completely anonymized according to Danish law.

All relevant trial-related documents, including the protocol, data dictionary, and the main statistical code, will be shared along with the data. There will be no predetermined end date for the data sharing. Data will be available for any research purpose to all interested parties (Danish or foreign) who have approval from an independent review committee and who have a methodological sound proposal as determined by the steering committee of the current trial. Only the methodological qualities and not the purpose or objective of the proposal will be considered. Interested parties will be able to request the data by

contacting the principal investigator. Authorship of publications emerging from the shared data will follow standard authorship guidelines from the International Committee of Medical Journal Editors and might or might not include authors from the steering committee depending on the nature of their involvement.

## 16. Tasks and responsibilities

Principal investigator: Overall responsibility for protocol development, funding, budget overview, data dictionary development, ethical approval, trial registration, educate trial personnel, daily management, trial oversight, assessment of overall recruitments, potential recruitment of additional sites, data management, data analysis, patient follow-up, dissemination, and presentation of results.

Steering committee: Protocol development, funding, budget overview, data dictionary development, trial oversight, dissemination of results, and responsibilities as principal investigator for short time periods.

Site investigators: Responsible for site-specific enrollment, reporting of site-specific issues or challenges to the principal investigator, and participant consent for data collection.

Treating physician: participant enrollment and randomization, POCUS assessment, and participant consent for data collection.

## References

1. Parshall MB, Schwartzstein RM, Adams L, et al. An Official American Thoracic Society Statement: Update on the Mechanisms, Assessment, and Management of Dyspnea. *American Journal of Respiratory and Critical Care Medicine* 2012;185(4):435-52. doi: 10.1164/rccm.201111-2042st
2. Kelly AM, Keijzers G, Klim S, et al. An Observational Study of Dyspnea in Emergency Departments: The Asia, Australia, and New Zealand Dyspnea in Emergency Departments Study (AANZDEM). *Academic Emergency Medicine* 2017;24(3):328-36. doi: 10.1111/acem.13118
3. Nielsen MK, Henriksen DP, Ostergaard KB, et al. Association between presenting complaints of acutely admitted medical patients and mortality: A cohort study. *European journal of internal medicine* 2018;54:e29-e32. doi: 10.1016/j.ejim.2018.06.011 [published Online First: 2018/06/27]
4. Sørensen SF, Ovesen SH, Lisby M, et al. Predicting mortality and readmission based on chief complaint in emergency department patients: a cohort study. *Trauma Surgery & Acute Care Open* 2021;6(1):e000604. doi: 10.1136/tsaco-2020-000604
5. Cairns C KK, Santo L. National Hospital Ambulatory Medical Care Survey: 2018 emergency department summary tables. [Available from: [https://www.cdc.gov/nchs/data/nhamcs/web\\_tables/2018\\_ed\\_web\\_tables-508.pdf](https://www.cdc.gov/nchs/data/nhamcs/web_tables/2018_ed_web_tables-508.pdf). accessed March 30, 2022.
6. Pines JM, Mullins PM, Cooper JK, et al. National Trends in Emergency Department Use, Care Patterns, and Quality of Care of Older Adults in the United States. *Journal of the American Geriatrics Society* 2013;61(1):12-17. doi: 10.1111/jgs.12072
7. Nordberg M, Lethvall S, Castrén M. The validity of the triage system ADAPT. *Scandinavian Journal of Trauma, Resuscitation and Emergency Medicine* 2010;18(Suppl 1):P36. doi: 10.1186/1757-7241-18-s1-p36
8. Grafstein E, Unger B, Bullard M, et al. Canadian Emergency Department Information System (CEDIS) Presenting Complaint List (Version 1.0). *CJEM* 2003;5(01):27-34. doi: 10.1017/s1481803500008071
9. Taboulet P, Moreira V, Haas L, et al. Triage with the French Emergency Nurses Classification in Hospital scale: reliability and validity. *European Journal of Emergency Medicine* 2009;16(2):61-67. doi: 10.1097/MEJ.0b013e328304ae57
10. Zachariasse JM, Seiger N, Rood PPM, et al. Validity of the Manchester Triage System in emergency care: A prospective observational study. *PLOS ONE* 2017;12(2):e0170811. doi: 10.1371/journal.pone.0170811
11. Green SM, Martinez-Rumayor A, Gregory SA, et al. Clinical uncertainty, diagnostic accuracy, and outcomes in emergency department patients presenting with dyspnea. *Archives of internal medicine* 2008;168(7):741-8. doi: 10.1001/archinte.168.7.741 [published Online First: 2008/04/17]
12. Hale ZE, Singhal A, Hsia RY. Causes of Shortness of Breath in the Acute Patient: A National Study. *Acad Emerg Med* 2018 doi: 10.1111/acem.13448 [published Online First: 2018/05/09]
13. Hunold KM, Caterino JM. High Diagnostic Uncertainty and Inaccuracy in Adult Emergency Department Patients with Dyspnea: A National Database Analysis. *Acad Emerg Med* 2018 doi: 10.1111/acem.13553 [published Online First: 2018/08/17]
14. Ray P, Birolleau S, Lefort Y, et al. Acute respiratory failure in the elderly: etiology, emergency diagnosis and prognosis. *Crit Care* 2006;10(3):R82. doi: 10.1186/cc4926 [published Online First: 2006/05/26]

15. Ovesen SH, Sørensen SF, Lisby M, et al. Change in diagnosis from the emergency department to hospital discharge in dyspnoeic patients. *Dan Med J* 2022;69(2) [published Online First: 2022/01/29]
16. Laursen CB, Sloth E, Lassen AT, et al. Point-of-care ultrasonography in patients admitted with respiratory symptoms: a single-blind, randomised controlled trial. *The Lancet Respiratory Medicine* 2014;2(8):638-46. doi: 10.1016/s2213-2600(14)70135-3
17. Pivetta E, Goffi A, Nazerian P, et al. Lung ultrasound integrated with clinical assessment for the diagnosis of acute decompensated heart failure in the emergency department: a randomized controlled trial. *Eur J Heart Fail* 2019 doi: 10.1002/ejhf.1379 [published Online First: 2019/01/29]
18. Becker TK, Tafoya CA, Osei-Ampofo M, et al. Cardiopulmonary ultrasound for critically ill adults improves diagnostic accuracy in a resource-limited setting: the AFRICA trial. *Tropical Medicine and International Health* 2017;22(12):1599-608. doi: 10.1111/tmi.12992
19. Riishede M, Lassen AT, Baatrup G, et al. Point-of-care ultrasound of the heart and lungs in patients with respiratory failure: a pragmatic randomized controlled multicenter trial. 2021;29(1):60. doi: 10.1186/s13049-021-00872-8
20. Gartlehner G, Wagner G, Affengruber L, et al. Point-of-Care Ultrasonography in Patients With Acute Dyspnea: An Evidence Report for a Clinical Practice Guideline by the American College of Physicians. *Annals of internal medicine* 2021;174(7):967-76. doi: 10.7326/M20-5504
21. Martindale JL, Wakai A, Collins SP, et al. Diagnosing Acute Heart Failure in the Emergency Department: A Systematic Review and Meta-analysis. *Acad Emerg Med* 2016;23(3):223-42. doi: 10.1111/acem.12878
22. Wang M, Luo X, Wang L, et al. A Comparison of Lung Ultrasound and Computed Tomography in the Diagnosis of Patients with COVID-19: A Systematic Review and Meta-Analysis. *Diagnostics* 2021;11(8):1351. doi: 10.3390/diagnostics11081351
23. Orso D, Guglielmo N, Copetti R. Lung ultrasound in diagnosing pneumonia in the emergency department: a systematic review and meta-analysis. *Eur J Emerg Med* 2017 doi: 10.1097/mej.0000000000000517 [published Online First: 2017/12/01]
24. Falster C, Jacobsen N, Coman KE, et al. Diagnostic accuracy of focused deep venous, lung, cardiac and multiorgan ultrasound in suspected pulmonary embolism: a systematic review and meta-analysis. *Thorax* 2021;thoraxjnl-2021-216838. doi: 10.1136/thoraxjnl-2021-216838
25. Yousefifard M, Baikpour M, Ghelichkhani P, et al. Screening Performance Characteristic of Ultrasonography and Radiography in Detection of Pleural Effusion; a Meta-Analysis. *Emergency (Tehran, Iran)* 2016;4(1):1-10. [published Online First: 2016/02/11]
26. Alrajhi K, Woo MY, Vaillancourt C. Test Characteristics of Ultrasonography for the Detection of Pneumothorax. *Chest* 2012;141(3):703-08. doi: 10.1378/chest.11-0131
27. Al Deeb M, Barbic S, Featherstone R, et al. Point-of-care Ultrasonography for the Diagnosis of Acute Cardiogenic Pulmonary Edema in Patients Presenting With Acute Dyspnea: A Systematic Review and Meta-analysis. *Academic Emergency Medicine* 2014;21(8):843-52. doi: 10.1111/acem.12435
28. Mozzini C, Di Dio Perna M, Pesce G, et al. Lung ultrasound in internal medicine efficiently drives the management of patients with heart failure and speeds up the discharge time. *Internal and Emergency Medicine* 2018;13(1):27-33. doi: 10.1007/s11739-017-1738-1
29. Zare MA, Bahmani A, Fathi M, et al. Role of point-of-care ultrasound study in early disposition of patients with undifferentiated acute dyspnea in emergency department: a multi-center prospective study. *Journal of Ultrasound* 2021((Fathi M., marziehfathi@yahoo.com) Trauma and Injury Research Center (TIRC), Iran University of Medical Sciences, Tehran, Iran(Bahmani A.,

- alirezabahmani13982020@gmail.com; Arefi M., arfymaryh@gmail.com; Hossein Sarbazi A., armaghan\_medicine.specialist@ya) doi: 10.1007/s40477-021-00582-y
30. Fryback DG, Thornbury JR. The efficacy of diagnostic imaging. *Med Decis Making* 1991;11(2):88-94. doi: 10.1177/0272989x9101100203 [published Online First: 1991/04/01]
  31. \_blockrand: Randomization for Block Random Clinical Trials\_ [program], 2020.
  32. R: A language and environment for statistical computing [program]. Vienna, Austria: R Foundation for Statistical Computing, 2023.
  33. Laursen CB, Sloth E, Lambrechtsen J, et al. Focused sonography of the heart, lungs, and deep veins identifies missed life-threatening conditions in admitted patients with acute respiratory symptoms. *Chest* 2013;144(6):1868-75. doi: 10.1378/chest.13-0882
  34. Weile J, Laursen CB, Frederiksen CA, et al. Point-of-care ultrasound findings in unselected patients in an emergency department - Results from a prospective observational trial. *BMC emergency medicine* 2018;18(1) doi: 10.1186/s12873-018-0211-4
  35. Section TACoEPAEU. Emergency Ultrasound Standard Reporting Guidelines: Introduction and Statement of Purpose: The American College of Emergency Physicians, 2018.
  36. Auriemma CL, Taylor SP, Harhay MO, et al. Hospital-Free Days: A Pragmatic and Patient-centered Outcome for Trials among Critically and Seriously Ill Patients. *Am J Respir Crit Care Med* 2021;204(8):902-09. doi: 10.1164/rccm.202104-1063PP [published Online First: 2021/07/29]
  37. Ahn JH, Jeon J, Toh HC, et al. SEARCH 8Es: A novel point of care ultrasound protocol for patients with chest pain, dyspnea or symptomatic hypotension in the emergency department. *PLoS ONE* 2017;12(3) doi: 10.1371/journal.pone.0174581
  38. Buhumaid RE, St-Cyr Bourque J, Shokoohi H, et al. Integrating point-of-care ultrasound in the ED evaluation of patients presenting with chest pain and shortness of breath. *American Journal of Emergency Medicine* 2019;37(2):298-303. doi: 10.1016/j.ajem.2018.10.059
  39. Dharmarajan K, Strait KM, Tinetti ME, et al. Treatment for Multiple Acute Cardiopulmonary Conditions in Older Adults Hospitalized with Pneumonia, Chronic Obstructive Pulmonary Disease, or Heart Failure. *Journal of the American Geriatrics Society* 2016;64(8):1574-82. doi: 10.1111/jgs.14303 [published Online First: 2016/07/23]
  40. Schulz KF, Grimes DA. Sample size slippages in randomised trials: exclusions and the lost and wayward. *The Lancet* 2002;359(9308):781-85. doi: [https://doi.org/10.1016/S0140-6736\(02\)07882-0](https://doi.org/10.1016/S0140-6736(02)07882-0)
  41. Detry MA, Lewis RJ. The Intention-to-Treat Principle. *JAMA* 2014;312(1):85. doi: 10.1001/jama.2014.7523
  42. Kollmann C, Jenderka K-V, Moran CM, et al. EFSUMB Clinical Safety Statement for Diagnostic Ultrasound – (2019 revision). *Ultraschall in der Medizin - European Journal of Ultrasound* 2020;41(04):387-89. doi: 10.1055/a-1010-6018
  43. Laursen CB, Sloth E, Lassen AT, et al. Does point-of-care ultrasonography cause discomfort in patients admitted with respiratory symptoms? *Scandinavian journal of trauma, resuscitation and emergency medicine* 2015;23((Laursen C.B., Christian.b.laursen@rsyd.dk.Institute; Davidsen J.R., jesper.roemhild.davidsen@rsyd.dk) Department of Respiratory Medicine, Odense University Hospital, Sdr. Boulevard 29, 5000, Odense C, Denmark(Laursen C.B., Christian.b.laursen@rsyd.dk.Ins):46. doi: 10.1186/s13049-015-0127-x
  44. Lov om ændring af lov om videnskabetisk behandling af sundhedsvidenskabelige forskningsprojekter [Available from: <https://www.retsinformation.dk/eli/lt/2012/604> accessed March 8, 2022.



45. Bekendtgørelse af lov om klage- og erstatningsadgang inden for sundhedsvæsenet [Available from: <https://www.retsinformation.dk/eli/lta/2011/1113> accessed March 8, 2022.
46. Schulz KF, Altman DG, Moher D. CONSORT 2010 Statement: updated guidelines for reporting parallel group randomised trials. *BMJ* 2010;340:c332. doi: 10.1136/bmj.c332
47. Defining the Role of Authors and Contributors: International Committee of Medical Journal Editors; [Available from: <http://www.icmje.org/recommendations/browse/roles-and-responsibilities/defining-the-role-of-authors-and-contributors.html> accessed March 8, 2022.
48. Taichman DB, Sahni P, Pinborg A, et al. Data Sharing Statements for Clinical Trials — A Requirement of the International Committee of Medical Journal Editors. *New England Journal of Medicine* 2017;376(23):2277-79. doi: 10.1056/nejme1705439

## Supplementary material

### Point-of-care ultrasound

#### Detailed ultrasound protocol descriptions

**Focused lung ultrasound** will include eight zones as previously described by Volpicelli and later implemented in clinical trials preceding this study. Each hemithorax is divided into four zones where the probe is placed, and an optimized six second cine-loop is produced. The anterior hemithorax (from the sternum to the anterior axillary line) is divided into two zones: an upper zone approximately between the clavicle and the second/third intercostal spaces, and a lower zone from the third space to the diaphragm. The lateral hemithorax is bounded between the anterior and the posterior axillary lines and divided into an upper and a lower zone midway between the diaphragm and the axillary fossa.

Standard patient positioning should be semi-upright, sitting with the head of the bed at 45°.

Image acquisition should preferably be performed with a lung preset. Lower lateral zones can beneficially be scanned with an abdominal-like preset (i.e., with harmonics/octave and crossbeam enabled). Probe choice can vary according to the ultrasound system, probes, and presets available. However, in modern ED or POCUS-adapted ultrasound systems, a convex probe in lung preset should be preferred, using depth of 18 cm and focus set at the pleural line. Optimal angling of the pleural line should be ensured by tilting the probe sideways until the point where the pleural line is most clearly delineated, hyperechoic, and thin. In absence of lung sliding, a lung point should be sought in oblique/transverse views (within rib spaces, parallel to adjacent ribs). In presence of b-lines, oblique/transverse views in that area should be explored to quantify the number of b-lines. Whenever sitting or lateral decubitus patient positioning is feasible, basal consolidations or effusions should be explored into the posterior aspects of the thorax to access the extent of the pathology. Wide, fusing, or coalescing B-lines should be quantified by multiplying the percentage of the intercostal space filled with confluent B-lines by 20 (i.e., fused B-lines occupying 60% of the scanned intercostal space = 14 B-lines). Pleural effusions should be explored with high-gain settings to examine the presence of echogenic swirling.

Image interpretation will include evaluation of pneumothorax, interstitial syndrome, lung consolidations, and pleural effusion.

#### **Pneumothorax**

*- Confirmed in the presence of a lung point. Suspected in the absence of lung sliding. Ruled out in the presence of lung sliding, B-lines, or lung pulse.*

#### **Interstitial syndrome**

*- Confirmed in the presence of  $\geq 3$  B-lines in  $\geq 2$  zones per hemithorax.*

#### **Lung consolidations**

*- A pneumonic consolidation is suggestive in the presence of a liver like consolidation with air bronchograms.*

- A compression atelectasis is suggestive for a consolidation that is “floating” in a large pleural effusion.
- Other consolidations will generally not be ruled in (i.e., subpleural infarcts, tumors, or obstructive atelectases).

### **Pleural effusion**

- Confirmed in the presence of an anechoic area separating the visceral and parietal pleura. Patient position dependency, lung curtain and spine sign should be explored to differentiate small effusions from parietal pleural thickening.
- In presence of septae, loculation or echogenic swirling pleural effusion should be classified as complex.

**Focused cardiac ultrasound** will include four views (subxiphoid four-chamber view, parasternal long-axis view, parasternal short-axis view, and apical four-chamber view). A phased array probe in cardiac preset should be used. Settings of depth, gain and focus will vary according to view and patient characteristics.

Optimal patient positioning should be supine (subxiphoid view) or left lateral decubitus (parasternal and apical views).

Image acquisition for each view should be in accordance with the following recommendations. Image sequence is left to the discretion of the sonographer.

Subxiphoid four-chamber view shows the right ventricle (RV), left ventricle (LV), right atrium (RA) and left atrium (LA). The mitral valve, the tricuspid valve and the interventricular septum (IVS) are also clearly visible.

Parasternal long-axis view shows the RV outflow tract, the LV, the LA, the ascending aorta, the mitral valve and the aortic valve. The IVS should appear almost horizontal in this view.

Parasternal short-axis view shows the RV as a crescent-shape, the LV perfectly circular, and both the papillary muscles.

Apical four-chamber view shows the RV, LV, RA, LA, mitral valve, tricuspid valve, and IVS. The IVS should be aligned in the middle of the sector.

Image interpretation will evaluate pericardial fluid, right ventricle dilation, and left ventricular systolic contractility.

### **Pericardial fluid**

- Presence of an echo-free zone separating the pericardium from the heart.

### **Right ventricle dilation**

- Right ventricle diameter > left ventricle diameter

### **Global left ventricular systolic dysfunction**

- *Depressed function is suggestive if eye-balling of fractional shortening, visual fractional area change, or visual ejection fraction is below 1/3*
- Hyperkinetic if “kissing walls” is present or approximated ejection fraction is  $\geq 70\%$

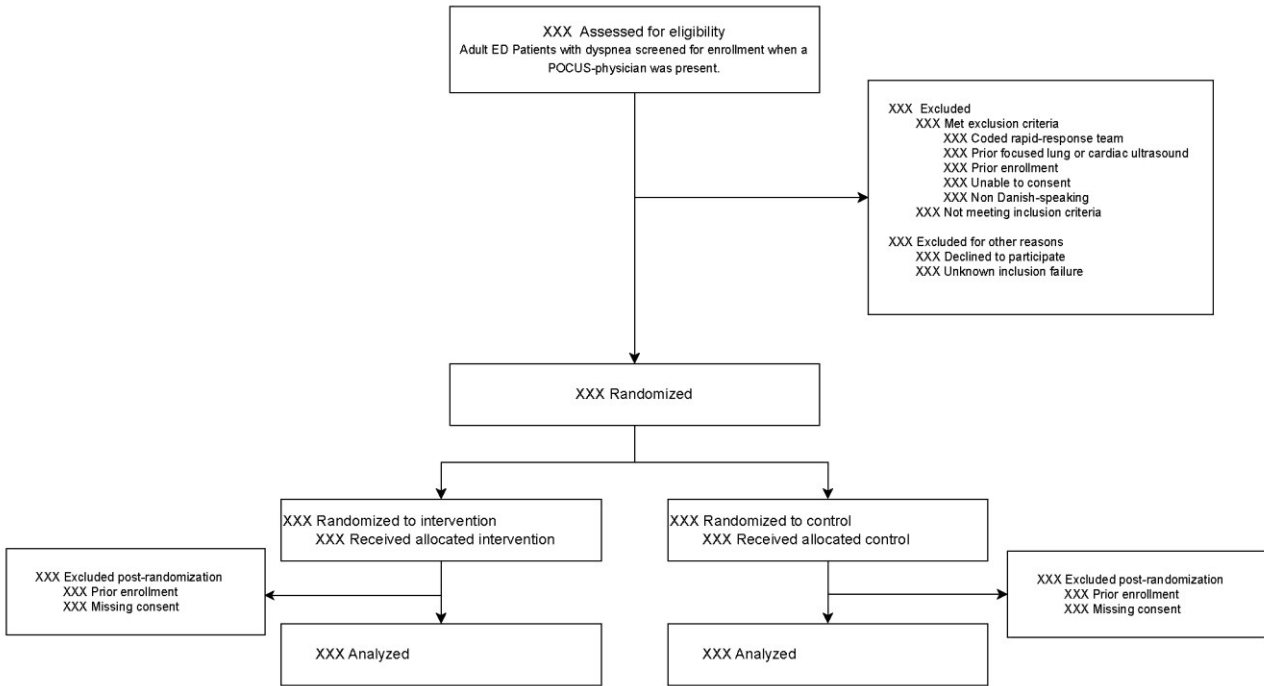
Point-of-care ultrasound-driven diagnostic pathway (Diagnostic decision recommendations)



COVID-19	1) It is unlikely that other chest imaging will show significant lung involvement from COVID-19
MALIGNANCY	1) If malignancy is suspected, neither POCUS or other SDP-tests are sufficient. CT TAP with contrast should be considered after consultancy with respiratory medicine
PULMONARY EMBOLISM	1) Consider immediate anticoagulation
	1) Pulmonary embolism may be increasingly likely. 2) Consider prompt CTPA.
ASTHMA EXA	1) Another diagnosis is more likely 2) Additional chest imaging may not be necessary
UPPER RESP. INFECTION	1) Another diagnosis is more likely 2) Additional chest imaging may not be necessary
	1) Pneumothorax is highly unlikely 2) Additional chest imaging will rarely reveal a pneumothorax of any clinical significance
PNEUMOTHORAX	1) Pneumothorax is highly likely

AECOPD = acute exacerbation of COPD, EXA = exacerbation, RESP. = respiratory

CONSORT flow diagram



## Patient tilfredshed

Record ID \_\_\_\_\_

Var længden af ventetiden fra du ankom, til du blev undersøgt, acceptabel?

Svar "ikke relevant", hvis du ikke oplevede ventetid

- Slet ikke (1)  I ringe grad (2)  I nogen grad (3)  I høj grad (4)  I meget høj grad (5)  
 Ved ikke  Ikke relevant for mig

Var personalet venligt og imødekommende?

- Slet ikke (1)  I ringe grad (2)  I nogen grad (3)  I høj grad (4)  I meget høj grad (5)  
 Ved ikke  Ikke relevant for mig

Spurgte personalet ind til din beskrivelse af din sygdom/tilstand?

- Slet ikke (1)  I ringe grad (2)  I nogen grad (3)  I høj grad (4)  I meget høj grad (5)  
 Ved ikke  Ikke relevant for mig

Var du med til at træffe beslutninger om din undersøgelse/behandling i det omfang, du havde behov for?

Svar "ikke relevant", hvis du ikke har behov for at træffe beslutninger

- Slet ikke (1)  I ringe grad (2)  I nogen grad (3)  I høj grad (4)  I meget høj grad (5)  
 Ved ikke  Ikke relevant for mig

Fik du alle de informationer, du havde behov for?

- Slet ikke (1)  I ringe grad (2)  I nogen grad (3)  I høj grad (4)  I meget høj grad (5)  
 Ved ikke  Ikke relevant for mig

Modtog du den information, som du havde behov for i forhold til din behandling/undersøgelse?

- Slet ikke (1)  I ringe grad (2)  I nogen grad (3)  I høj grad (4)  I meget høj grad (5)  
 Ved ikke  Ikke relevant for mig

Blev du løbende informeret om, hvad der skulle foregå?

- Slet ikke (1)  I ringe grad (2)  I nogen grad (3)  I høj grad (4)  I meget høj grad (5)  
 Ved ikke  Ikke relevant for mig

Var den mundtlige information, du fik under dit besøg, forståelig?

- Slet ikke (1)  I ringe grad (2)  I nogen grad (3)  I høj grad (4)  I meget høj grad (5)  
 Ved ikke  Ikke relevant for mig



---

Gav personalet dig tilstrækkelig information til, at du var tryk ved tiden efter dit besøg?

- Slet ikke (1)    I ringe grad (2)    I nogen grad (3)    I høj grad (4)    I meget høj grad (5)  
 Ved ikke    Ikke relevant for mig

---

Er du tilfreds med den behandling, som du modtog for din sygdom/tilstand?

- Slet ikke (1)    I ringe grad (2)    I nogen grad (3)    I høj grad (4)    I meget høj grad (5)  
 Ved ikke    Ikke relevant for mig

---

Er du alt i alt tilfreds med dit besøg?

- Slet ikke (1)    I ringe grad (2)    I nogen grad (3)    I høj grad (4)    I meget høj grad (5)  
 Ved ikke    Ikke relevant for mig

---

Skriv venligst her, hvis du synes, [akutmodtagelsen] kunne gøre noget bedre eller gjorde noget særligt godt:

Det, du skriver i kommentarfeltet, sendes uredigeret videre til hospitalet. Undlad at skrive personlige oplysninger såsom navn, cpr-nummer, adresse m.v.

---

### Systematic word search-string

To be used to identify patients with chief complaint, Dyspnea, in departments that use a triage system that does not incorporate a chief complaint.

In Danish (in using):

"dyspnø" OR "åndenød" OR "vejrtrækningsbesvær" OR "vejrtrækningsproblemer" OR "ortopnø" OR "taledyspnø" OR "stakåndet" OR "resp\* besvær" OR "næsten ikke trække vejret" OR "følelse af ikke at få luft" OR "kvælningfølelse" OR "funktionsdyspnø" OR "\*dyspnø"

In English (administrative translation)

"Dyspnea" OR "Breathlessness" OR "Breathing difficultie" OR "Breathing problem" OR "Orthopne" OR "Speaking-related dyspnea" OR "Dyspnea during speech" OR "Shortness of breat" OR "Respiratory difficulties" OR "can't breat" OR "feelings of being smothered" OR "feelings of being suffocate"

## Scale to grade the physicians' experienced benefit of diagnostic tests

### 1. No new information.

This option was considered if a test revealed no pathology or pathology, which was already known by the physician. E.g., if the ultrasound examination found an unchanged pleural effusion, which was known from earlier hospitalization. This option was also chosen if a test was inconclusive.

### 2. New Pathology, but no further action needed.

This option was considered if a test revealed pathology, which the physician found no need to treat or investigate further. E.g., solid pulmonary noduli < 6 mm in a low-risk patient.

### 3. New Pathology, further diagnostics needed.

This option was considered if a test found new pathology and the physician found it relevant to investigate this further e.g., with other diagnostic tests like blood test or imaging.

### 4. New Pathology, presumptive diagnosis changed.

This option was considered if the new pathology found would alter the primary tentative diagnosis, which the physician had before the given test result. E.g., if the physician suspected pneumothorax and the chest x-ray was consistent with pneumonia.

5. New Pathology, immediate treatment needed This option was considered if new pathology was determined to be in need of immediate treatment. E.g., severe hyperkalemia or a pneumothorax in a patient with unstable vital signs.

Adapted from: Weile J, Frederiksen CA, Laursen CB, Graumann O, Sloth E, Kirkegaard H. Point-of-care ultrasound induced changes in management of unselected patients in the emergency department - a prospective single-blinded observational trial. *Scandinavian Journal of Trauma, Resuscitation and Emergency Medicine*. 2020;28(1). doi: 10.1186/s13049-020-00740-x.